



MONTHLY MEMBERSHIP PROGRESS REPORT

District 410 C

Results as of: 2/29/2016

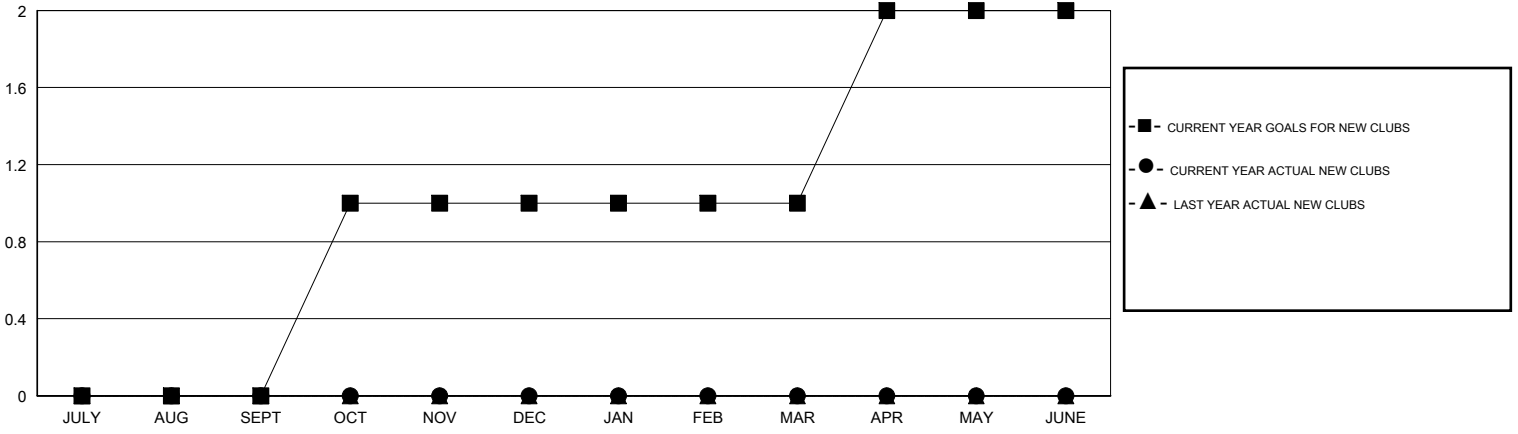
GMT: Mike Newlands

LOCATION REP OF SOUTH AFRICA

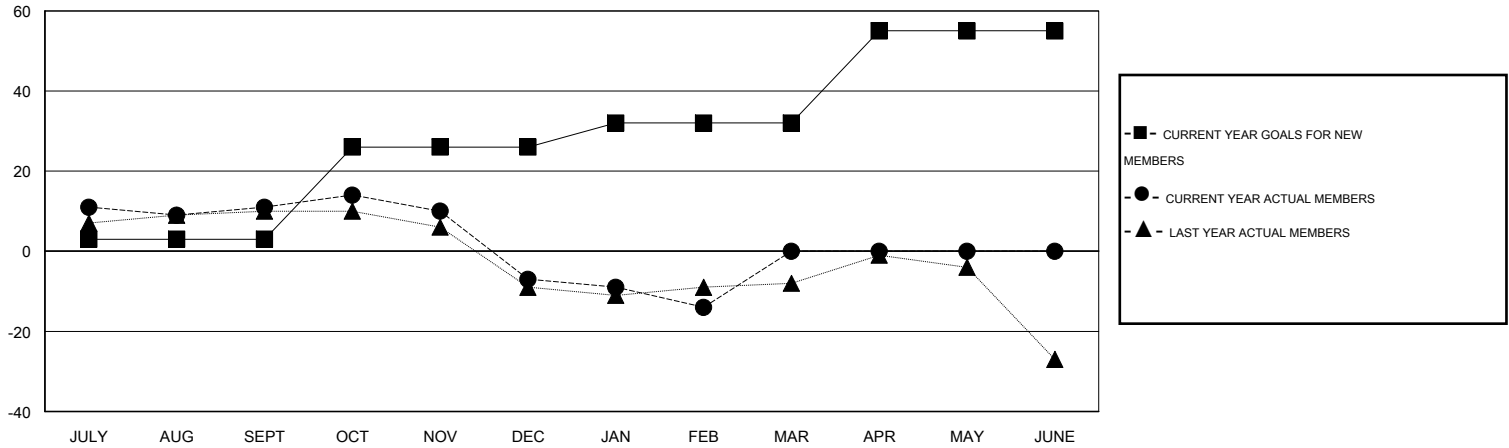
GMT CA 6-Af

| Clubs | | | | | Members | | | | |
|-----------------------|---------------|-----------|---------------|---------------|-----------------------|-----------------|-------------------------------|-----------------|---------------|
| RESULTS FOR 2015-2016 | | | | | RESULTS FOR 2015-2016 | | | | |
| QUARTER | NEW CLUB GOAL | NEW CLUBS | DROPPED CLUBS | NET GAIN/LOSS | QUARTER | NEW MEMBER GOAL | CHARTER AND NEW MEMBERS ADDED | DROPPED MEMBERS | NET GAIN/LOSS |
| JULY/AUG/SEPT | 0 | 0 | 1 | -1 | JULY/AUG/SEPT | 3 | 29 | 18 | 11 |
| OCT/NOV/DEC | 1 | 0 | 0 | 0 | OCT/NOV/DEC | 23 | 4 | 22 | -18 |
| JAN/FEB/MAR | 0 | 0 | 0 | 0 | JAN/FEB/MAR | 6 | 5 | 12 | -7 |
| APR/MAY/JUNE | 1 | 0 | 0 | 0 | APR/MAY/JUNE | 23 | 0 | 0 | 0 |

GOALS AND ACTUAL NEW CLUBS CUMULATIVE



GOALS AND ACTUAL MEMBERS CUMULATIVE



| | | |
|------------------------|-------------------------------------------------------|-------------------------------|
| DROPPED CLUBS: 1 | 16 CLUBS OF 32 ADDED 1 OR MORE NEW MEMBERS | GENDER DISTRIBUTION |
| | | MALE 242 (60.20%) |
| | | FEMALE 160 (39.80%) |
| DROPPED MEMBERS | CLICK HERE FOR HEALTH ASSESSMENT DATA | FAMILY UNIT MEMBERS 85 |
| DECEASED 2 | | HEAD OF HOUSEHOLD 42 |
| CLUB CANCELLED 12 | | NON-HEAD OF HOUSEHOLD 43 |
| OTHER 38 | | |
| TOTAL 52 | | |